

MONTHLY MEMBERSHIP PROGRESS REPORT

District 412 A

Results as of: 10/31/2023

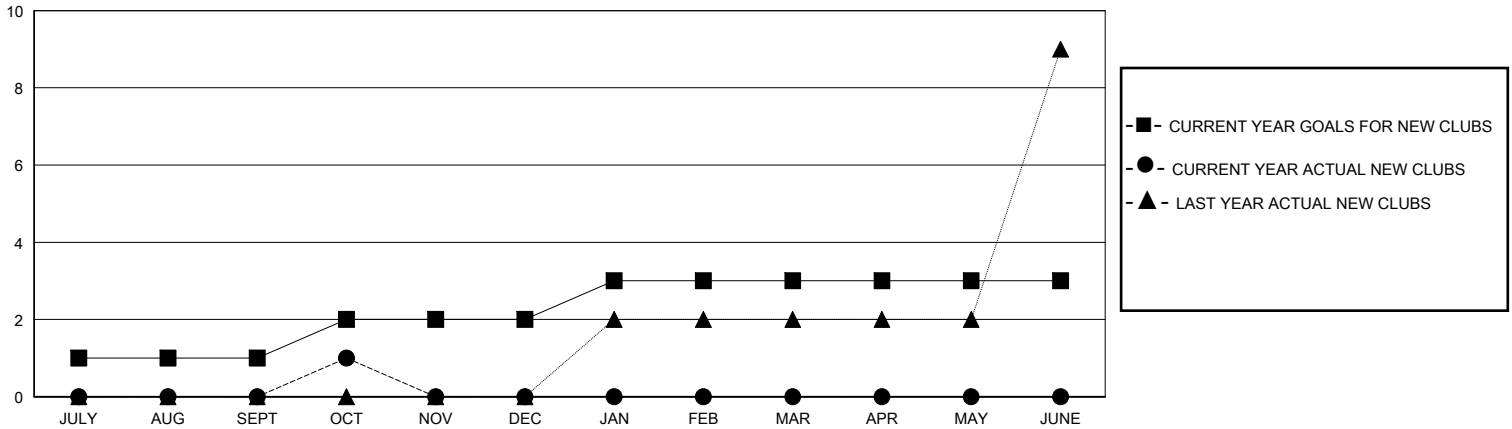
GMT:

LOCATION ZIMBABWE

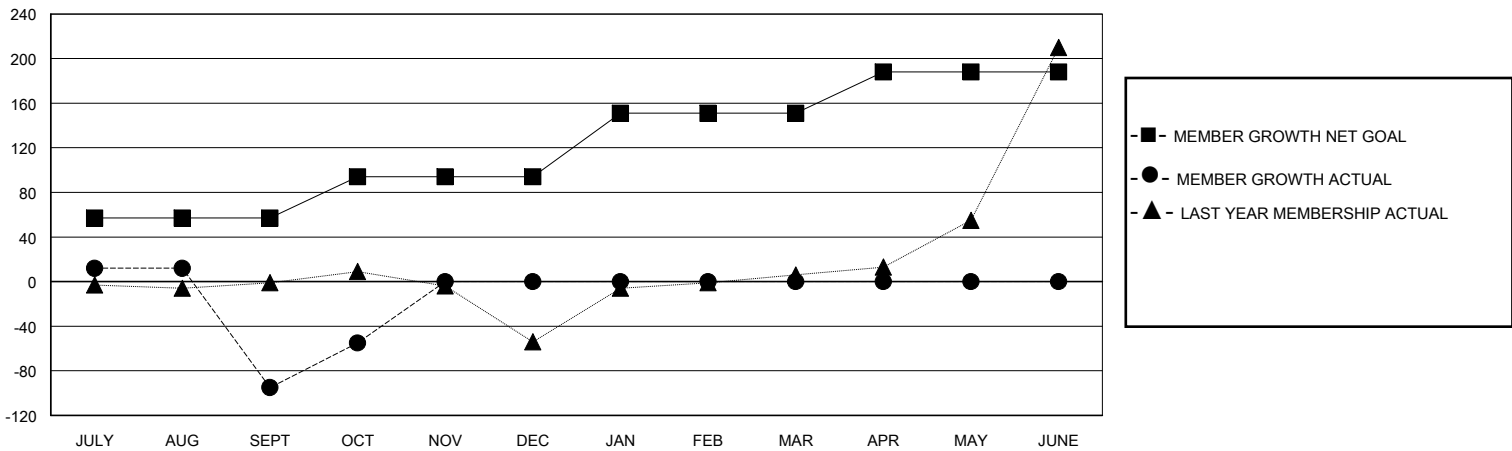
GMT CA

| Clubs | | | | Members | | | |
|-----------------------|---------------|-----------|---------------|-----------------------|------------------------|----------------------|----------------------------------------------|
| RESULTS FOR 2023-2024 | | | | RESULTS FOR 2023-2024 | | | |
| QUARTER | NEW CLUB GOAL | NEW CLUBS | DROPPED CLUBS | QUARTER | MEMBER GROWTH NET GOAL | MEMBER GROWTH ACTUAL | DROPPED MEMBERS ACTUAL (including transfers) |
| JULY/AUG/SEPT | 1 | 0 | 0 | JULY/AUG/SEPT | 57 | 33 | 125 |
| OCT/NOV/DEC | 1 | 1 | 0 | OCT/NOV/DEC | 37 | 67 | 27 |
| JAN/FEB/MAR | 1 | 0 | 0 | JAN/FEB/MAR | 57 | 0 | 0 |
| APR/MAY/JUNE | 0 | 0 | 0 | APR/MAY/JUNE | 37 | 0 | 0 |

GOALS AND ACTUAL NEW CLUBS CUMULATIVE



GOALS AND ACTUAL MEMBERS CUMULATIVE



| | | |
|------------------------------------------------------------------------------------|-----------------------------------------------------------|------------------------------------------------------------------------|
| DROPPED CLUBS: 0 | 25 CLUBS OF 67 ADDED 1 OR MORE NEW MEMBERS | GENDER DISTRIBUTION MALE 576 (46.12%) FEMALE 673 (53.88%) |
| DROPPED MEMBERS DECEASED 0 CLUB CANCELLED 0 OTHER 152 TOTAL 152 | CLICK HERE FOR CUMULATIVE MEMBERSHIP DATA | TOTAL FAMILY UNIT MEMBERS 351 FAMILY MEMBERS PAYING HALF DUES 207 |